

lenovo

the energy star
advantage



ThinkCentre & ThinkPad
The Environmental-friendly Choice



greener → greener → greener → greener → greener → greener → greener → greener →

Leadership Starts with YOU!

lenovo



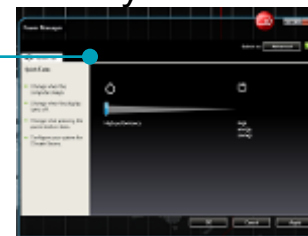


ThinkCentre Green Solution



ThinkCentre M58/M58p
- EPEAT Gold*, GREENGUARD
- Meet ES 5.0 criteria*

Power Manager
- Save \$71**** per system annually



ThinkVision monitors
- EPEAT Gold, Low Halogen*



Green Fingerprint Keyboard**
- 35% recycled material



Green Packaging***
- 100% recycled/recyclable material



Lenovo Asset Recovery Service
- Securely dispose of retired assets



* Please find the footnotes in speaker notes

lenovo

EPEAT GOLD

www.epeat.net



EPEAT (Electronic Product Environmental Assessment Tool) evaluates electronic products in relation to 51 total environmental criteria, 23 required criteria and 28 optional criteria. To qualify for registration as an EPEAT product, the product must conform to all the required criteria.

- *All ES 4.0 models are EPEAT Gold Certified!*



GREENGUARD

www.greenguard.org

GREENGUARD Environmental Institute (GEI) is an industry-independent, non-profit organization that certifies that various products' chemical & particle emissions meet acceptable pollutant guidelines and standards ensuring that indoor air quality is not affected.

- *On All M58/M58p/M58e Form Factors*
- *Dell and HP do not have GEI Certified Products*



the energy star
advantage

ENERGY STAR 4.0

www.energystar.gov

- Power supplies that convert at least 80% of incoming electricity for use
- Use dramatically less power than standard models = Big Energy Savings and Money Savings



CLIMATE SAVERS

www.climatesaverscomputing.org

Climate Savers Computing Initiative seeks to reduce global CO2 emissions from the operation of computers

- *On M58/M58p/M58e Small FF*

greener → greener → greener → greener → greener → greener → greener → greener →

1. Buy *ENERGY STAR and EPEAT Gold* certified hardware
2. Choose *GREENGUARD* certified systems (tests up to 2,000 chemicals)
3. Deploy *power management* software
4. Use more *energy efficient displays*
5. Use *bulk packaging* for large quantity purchasing
6. Buy desktops that are both *space and energy saving*
7. Select desktops that the noise is *<25dB in idle mode*
8. *Recycle* used PCs
9. Order systems with *recycled packaging*



Intra-line Comparison



	Feature	A58	A62	M58e	M58/ M58p
Energy Efficiency	Power Manager	●	●	●	●
	ENERGY STAR 4.0 (current)	○	○	○	○
	ENERGY STAR 5.0 (from July 1, 09)	⊘	⊘	○	○
Green Materials	EPEAT Gold	○	○	○	○
	100% Recycled Packaging	⊘	⊘	⊘	○
	30% Post-consumer Plastic	●	●	●	●
Product Stewardship	Asset Recovery Service	●	●	●	●
	Bulk Packaging	●	●	●	●
Healthy	GREENGUARD	●	●	●	●
	Tool-less Design	●	●	●	●
	Green Fingerprint Keyboard	○	○	○	○
Acoustic	Quieter than office ambient noise (30dB)	25dB	24dB	25dB	22dB

● Standard ○ Optional/Select models ⊘ Not available

Power Manager - Save up to \$71 per desktop per year*

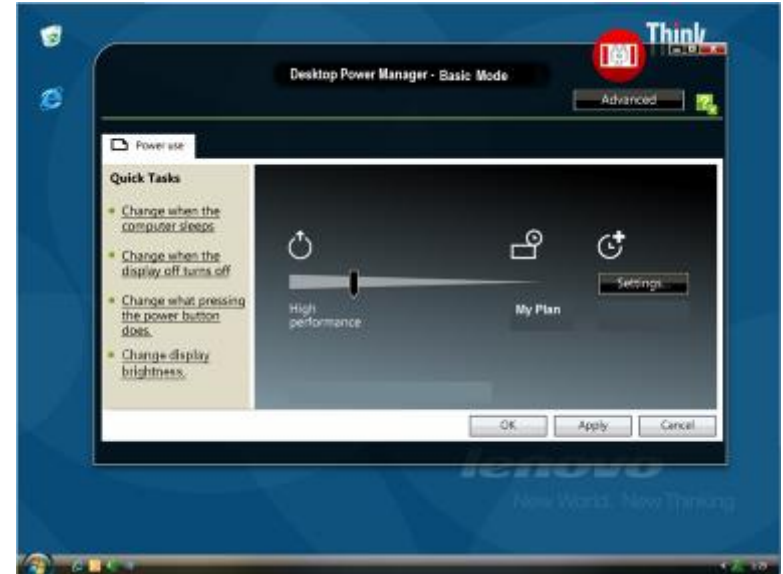
Consider the following:

A **standard-issue PC** (left on all the time) uses **746 kwh** a year

By comparison, a **refrigerator** uses about **500 kwh** a year.”

Source: U.S. Environmental Protection Agency

the solution →



- Remote deployment of power schemes and global settings
 - Enabled by Active Directory and LANDesk
- Time-based control – enable PC shut offs at evenings and weekends

* \$71 is the cost saving based on using default settings of the Lenovo Energy Calculator comparing a ThinkCentre M58 Tower with Power Usage model of Business, Power Management Enabled against a ThinkCentre M52 Tower with the usage model of Business, Power Management disabled. Results are based on a hypothetical typical customer scenario and your results will vary.

Ahead of the Curve on Energy Efficient Technologies

- All ThinkCentre M-series desktops meets ENERGY STAR 5.0 criteria*
- Full line-up of ThinkVision monitors meet the new ENERGY STAR 5.0 criteria



* SFF and Eco USFF meets ES5 criteria. Tower to meet from Q3 09.

For more information: http://www.energystar.gov/index.cfm?fuseaction=find_a_product.showProductGroup&pgw_code=CO

The Only GREENGUARD certified PC in Industry

- Stringent testing by GREENGUARD Environmental Institute
- Probed for the presence of up to 2,000 potentially harmful contaminants



For more information: <http://www.greenguard.org/>

ThinkCentre Energy Calculator



lenovo Energy Calculator

Estimate your annual energy savings by selecting your Country of origin, choosing your Usage Model, and configuring system details.²

Country:

Usage Model:

[Print](#)

Baseline configuration

-
-
-



Choose up to two models to compare to baseline configuration

-
-
-



-
-
-



Usage Input

-
-

Usage Input

-
-

Usage Input

-
-

Annual estimates per unit

Energy:	845 KWH
Energy costs ¹ :	\$51.55
CO ₂ emissions:	571 KG

Annual estimates per unit

Energy:	280 KWH (955360 BTUs)
Energy costs ¹ :	\$17.08
CO ₂ emissions:	189 KG

Annual estimates per unit

Energy:	364 KWH (1241968 BTUs)
Energy costs ¹ :	\$22.20
CO ₂ emissions:	246 KG

Total annual savings

Number of units:	<input type="text" value="1"/>
Unit cost savings ¹ :	\$34.47
Total cost savings ¹ :	\$34.47
Unit CO ₂ emissions avoided:	382 KG
Total CO ₂ emissions avoided:	382 KG

Total annual savings

Number of units:	<input type="text" value="1"/>
Unit cost savings ¹ :	\$29.35
Total cost savings ¹ :	\$29.35
Unit CO ₂ emissions avoided:	325 KG
Total CO ₂ emissions avoided:	325 KG

¹ All savings are reflected in U.S. Dollars.

² Some models included are not for sale, but are listed for comparative purposes only. Please see www.lenovo.com for availability.

* <http://lenovoweb.com/energycalculator/>

22dB in Idle mode* - Quieter than ambient noise in the office



145 dB



105 dB



55-60 dB



22 dB

* M58/M58p SFF in Idle mode, Operation position. Source: Lenovo R&D testing data

Securely dispose your IT assets, in a green way

- **Value Recovery**
 - Broker assets for cash or credit towards new PCs
- **Discovery**
 - Onsite inventory and value assessment certificate
- **Secure Disk Wipe**
 - Disk overwrite to DOD specifications
- **Refurbishment**
 - Prepare asset for resale or reuse /cascade
- **Packaging & Transportation**
 - Consolidate assets, palletize & ship
- **Disposal**
 - Environmental friendly recycling with disposal certificate



For more information: http://www.lenovo.com/services_warranty/US/en/asset_recovery.html

100% Recycled/Recyclable Packaging*

- Made from 100%, recycled, Reflex thermoformed cushions
- Provides Environmentally friendly, Economical, Full PC protection
- Less space required – can be stacked together after unpack



* Available on ThinkCentre M58/M58p Eco USFF

Green Fingerprint Keyboard

lenovo

35% Post-consumer recycled materials*

- Integrated fingerprint swipe sensor puts your passwords at the tip of your fingers
- ThinkVantage button guides you to a host of information and tools

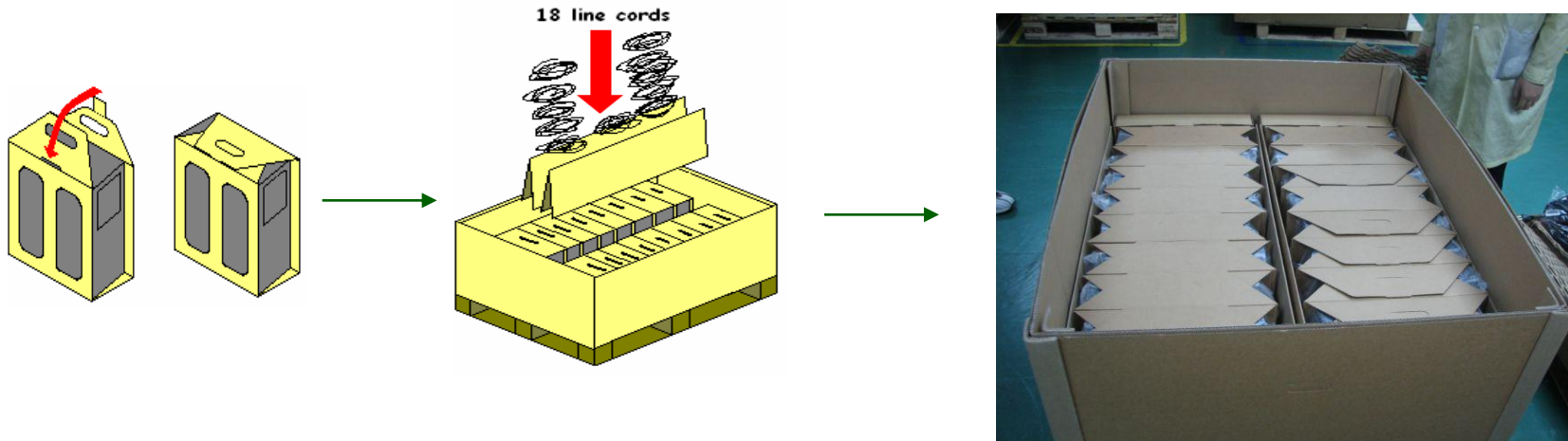


* Optional. P/N: 41X6828 (US English). For more information:

http://shop.lenovo.com/SEUILibrary/controller/e/web/LenovoPortal/en_US/catalog.workflow:item.detail?GroupID=38&Code=73P4730¤t-category-id=E9ADAEB6787146E29B78400A33E7FE8A

Bulk Packaging - Save up to \$5.83 per PC

- Less storage space required and less waste disposal



* Transportation and material costs. On Tower model.

Energy Efficiency – Cost savings



Up to \$9.53 Savings Per Year

L174



17"
5:4
1280x1024
VGA
250 cd/m²
700:1
5 ms
TCO 03
Low Power



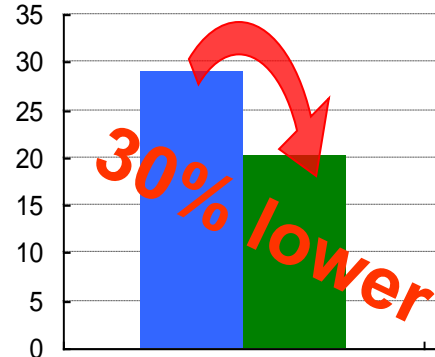
L197w



19" wide
16:10
1440x900
VGA+DVI
250 cd/m²
1000:1
5 ms
TCO 03
Low Power
Vista Premium



✓ Lower Energy Costs



■ = Conventional models (equal to L171, L194w)
■ = Low power models

		L174	197 Wide
Per Year Power Saving*	Boston	\$7.21	\$ 6.73
	Munich	\$9.53	\$ 8.89
	Tokyo	\$8.05	\$ 7.51

✓ Environmentally friendly

- 17kg less CO₂ emissions**
- 50% less mercury
- EPEAT Gold



* Assumptions: 10 hrs/day, 5 days/week, 52 weeks/yr, average electricity cost in respective city in local currency

** 1kwh = 0.605kg CO₂. Data source: http://www.eia.doe.gov/cneaf/electricity/page/co2_report/co2report.html

Greenest ThinkPad Notebooks Ever

lenovo



Lenovo is committed to environmentally friendly products and processes

- ThinkPad features technology that provide increased energy savings:
 - SSD
 - LED backlight panels
 - LV processors (X Series only)
- Lenovo has also focused on making the manufacturing process as environmentally friendly as possible:
 - All packaging materials are 90 % recyclable
 - Reduction of environmentally sensitive materials like cadmium, lead, mercury etc
 - Overall the NEW ThinkPad notebooks consume 25% less energy compared to previous generation Notebook products.



Environmentally Friendly – EPEAT Gold

EPEAT Ratings

- The Electronic Product Environmental Assessment Tool (EPEAT) is a non-profit organization that evaluates electronic products based on their environmental attributes.
- The X300 was the world's **First** EPEAT Gold Notebook.
- Conforms to 23/27 optional criteria outlined by EPA
- For ThinkPad's Montevina Launch we will have even more notebooks achieving EPEAT Gold certification.

Silver	Gold
<ul style="list-style-type: none">• X Series X200, X200s• R Series R500, R400• SL Series, SL400, SL500	<ul style="list-style-type: none">• X Series X300, X301, X200 X200 Tablet• T Series T500, T400• SL Series SL300 <p>(LED Backlight models only)</p>



Data Source: <http://www.epeat.net>

ThinkPad Goes Green

- The Most Energy Efficient ThinkPad
- Industry's First PC with GreenGuard
- Air Quality certification
- First ThinkPad (R series) offering with Post consumer recycled plastics
- Environmentally Responsible offering with EPEAT Gold rating Energy Star 4.0
- "Consistently Quiet" Acoustics
- Intel Energy Efficient 25W processor technology
- Lowest Carbon Footprint
- 25% lower power consumption in comparison to previous generation notebooks
- X KW/hr savings and \$20 (TBD) savings per year



thank you grazie **merci** danke **grazias** 謝謝 СПАСИБО
gracias **obrigado** ありがとう **dank** takk **bedankt** dakujem

